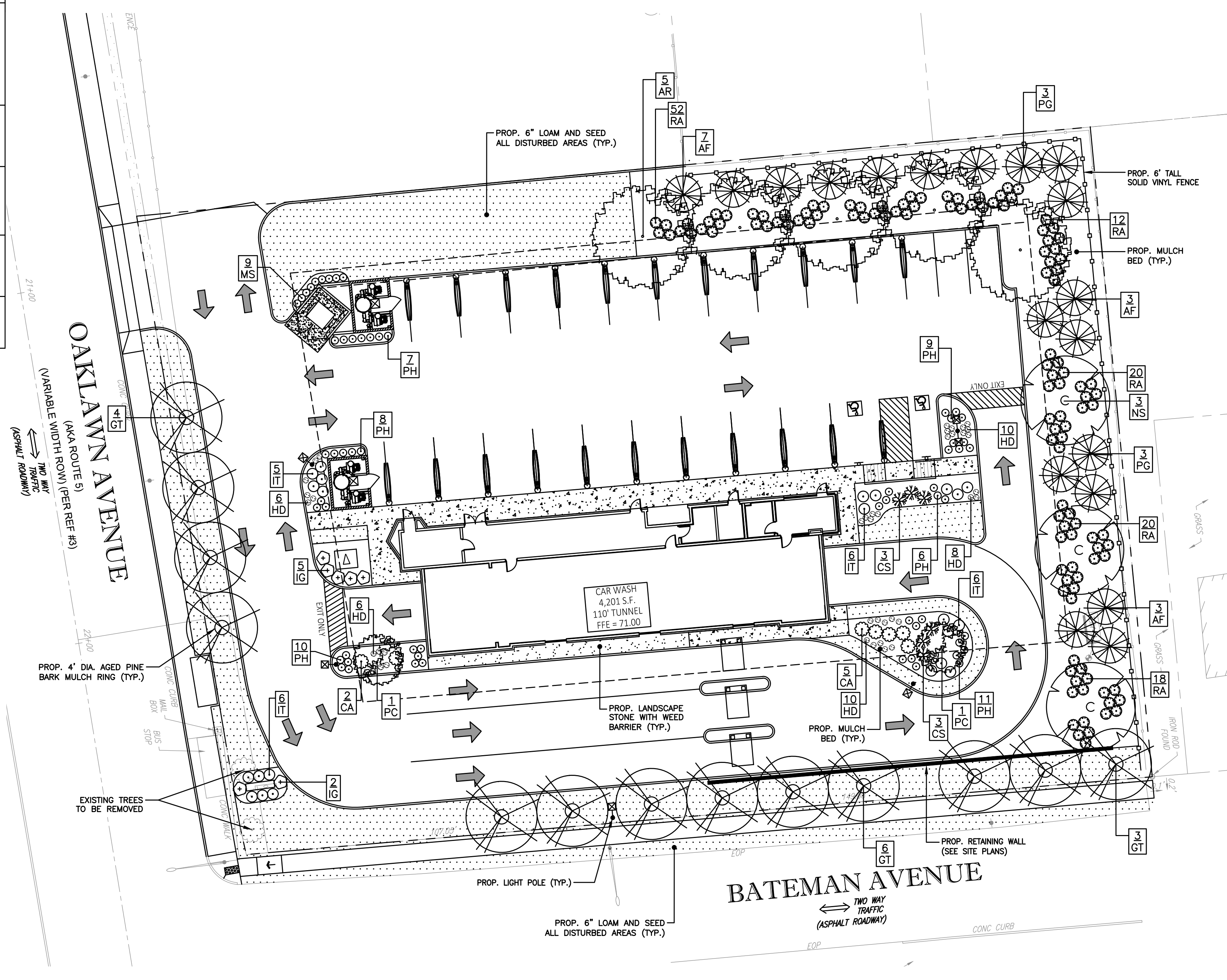
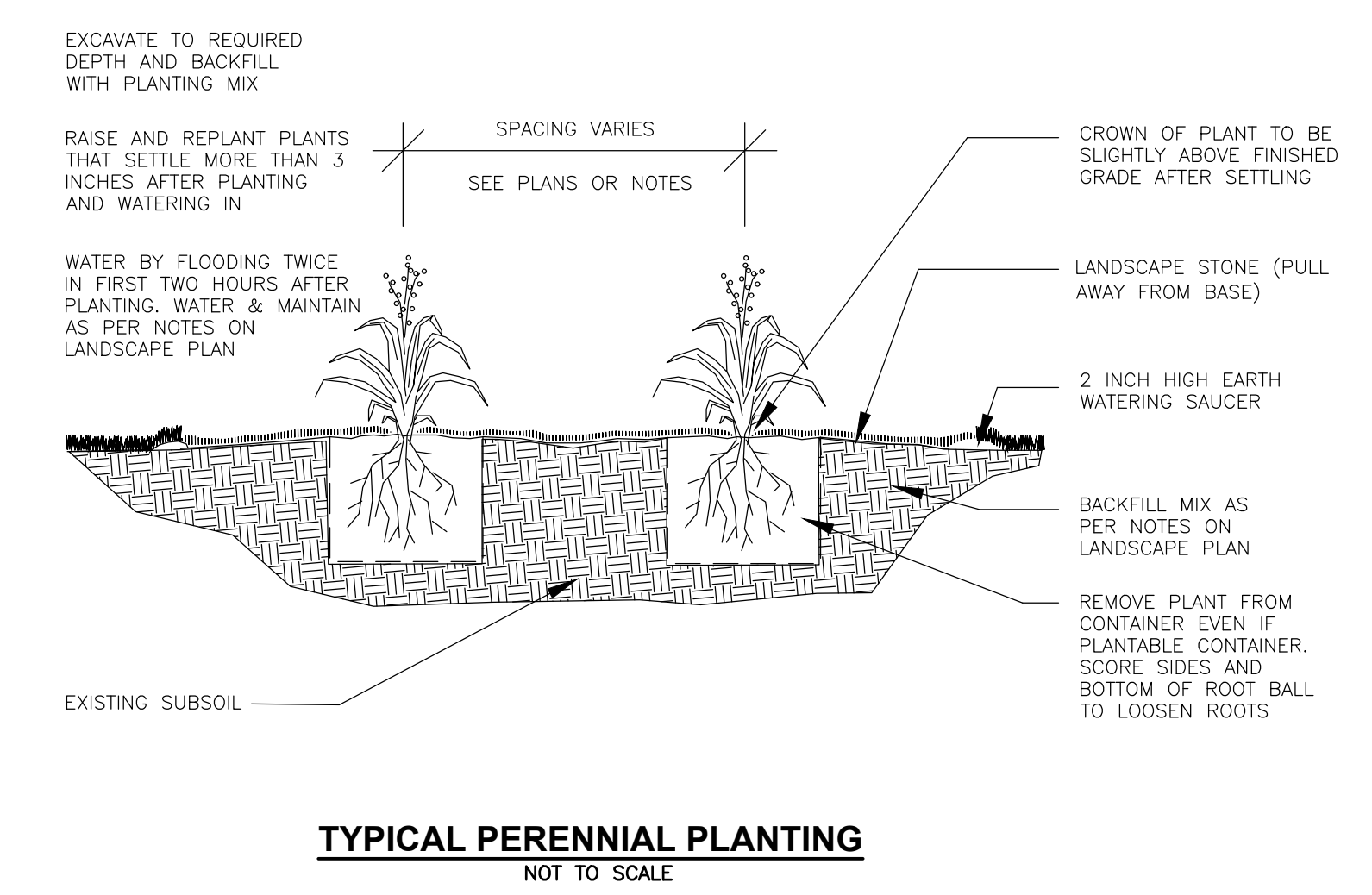
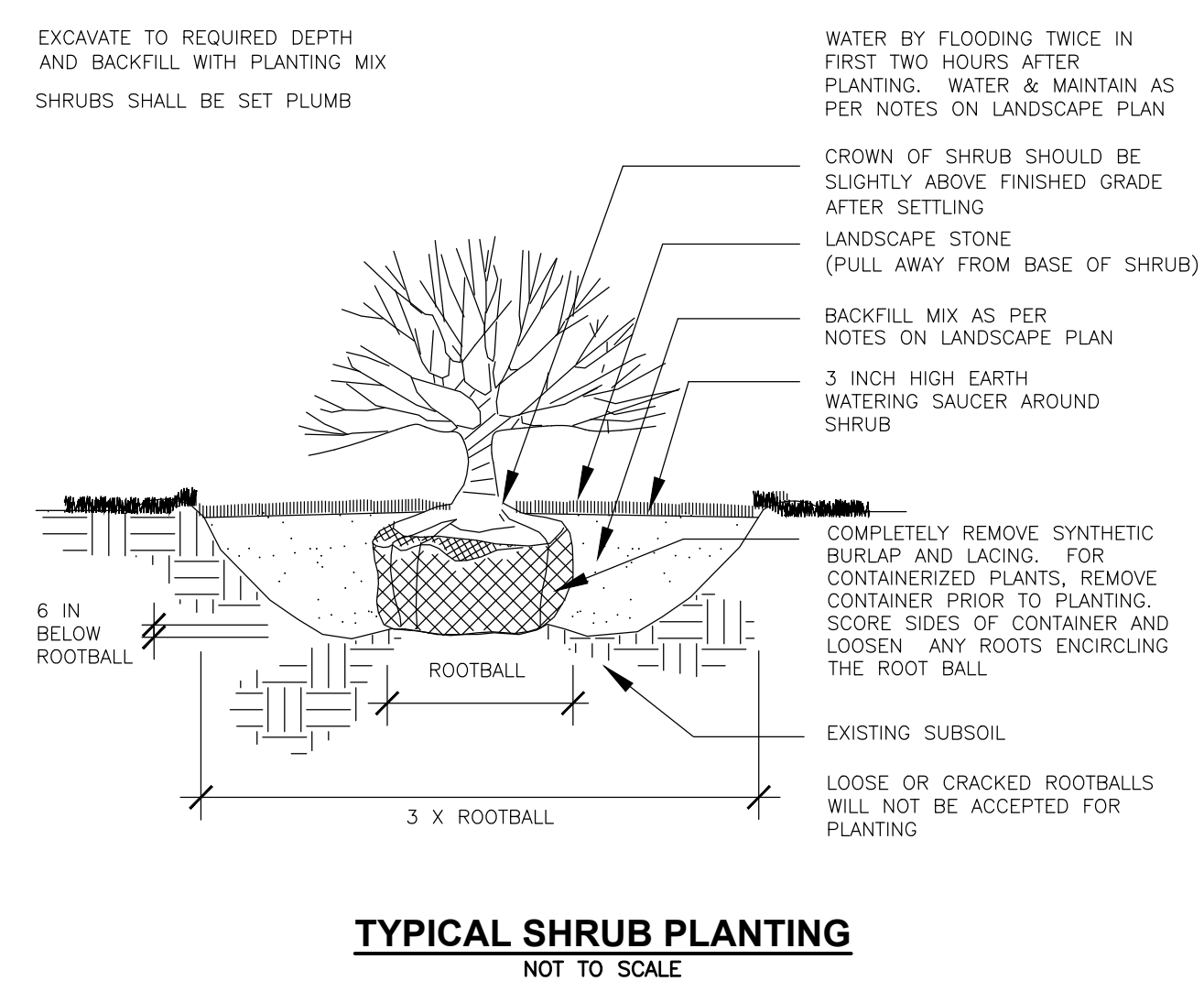
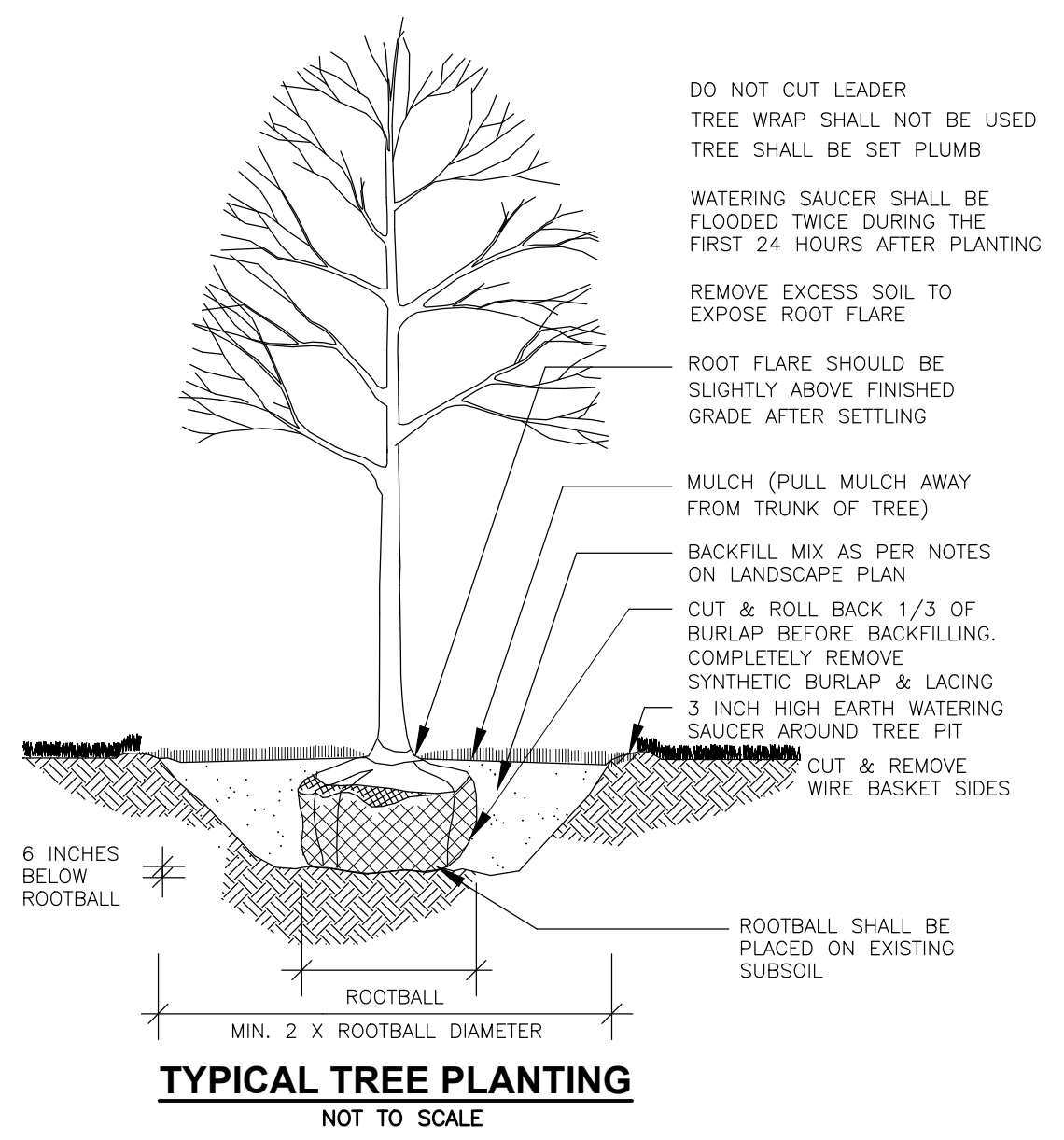


PLANTING SCHEDULE					
PLANT	QNTY	BOTANICAL NAME	COMMON NAME	MIN. INSTALL. SIZE	REMARKS
<b>TREES</b>					
AR	5	ACER RUBRUM 'OCTOBER GLORY'	OCTOBER GLORY RED MAPLE	2 1/2" - 3" CAL., B&B	
AF	13	ABIES FRASERI	FRASER FIR	6" - 7" HT., B&B	
GT	13	GLEDTISIA TRICANTHOS 'STREET KEEPER'	STREET KEEPER HONEY LOCUST	2 1/2" - 3" CAL., B&B	
NS	3	NYSSA SYLVATICA	BLACK TUPELO	2 1/2" - 3" CAL., B&B	
PC	2	PRUNUS SARGENTII 'COLUMNARIS'	COLUMNAR SARGENT CHERRY	2 1/2" - 3" CAL., B&B	
PG	6	PICEA PUNGENSIS LAUCA	COLORADO BLUE SPRUCE	7" - 8" HT., B&B	
<b>SHRUBS</b>					
CA	7	CLETHRA ALNIFOLIA 'HUMMINGBIRD'	HUMMINGBIRD SUMMERSWEET	2' - 3' HT., 3 GAL.	
CS	6	CORNUS SERICEA 'ALLEMANS COMPACTA'	COMPACT REDTIG DOGWOOD	2' - 3' HT., 3 GAL.	
IG	7	ILEX GLABRA 'COMPACTA'	COMPACT INKBERRY	2' - 3' HT., 3 GAL.	
IT	23	Itea VIRGINICA 'LITTLE HENRY'	LITTLE HENRY VIRGINIA SWEETSPICE	18" - 24" HT., 3 GAL.	
RA	122	RHIS AROMATICA 'GROW LOW'	GROW LOW SUMAC	18" - 24" SPRL., 3 GAL.	
<b>PERENNIALS &amp; GRASSES</b>					
MS	9	MISCANTHUS SINENSIS 'GRACILLIMUS'	MAIDEN GRASS	2 GAL.	
HD	40	HEMEROCALLIS 'STELLA DE ORO'	DWARF YELLOW DAYLILY	1 GAL.	
PH	51	PENNISETUM ALOPERCUROIDES 'HAMELIN'	DWARF FOUNTAIN GRASS	1 GAL.	

X	PLANT QUANTITY		PROPOSED LANDSCAPE STONE WITH WEED BARRIER		PROPOSED LOAM AND SEED
XX	PLANT DESIGNATION				

**LANDSCAPE REQUIREMENTS**

SPRINGFIELD SITE PLAN REGULATION	REQUIRED	PROVIDED
17.84.140-C-1(b) LANDSCAPE STANDARDS - GENERAL REQUIREMENTS	A MINIMUM OF FIFTEEN (15) PERCENT OF A DEVELOPMENT'S PARCEL SHALL BE LANDSCAPED 48,120 SF X 15% = 7,218 SF	31.4% LANDSCAPE AREA
17.84.140-C-4(b) TREES	ONE STREET TREE SHALL BE PLANTED FOR EVERY THIRTY-FIVE (35) FEET OF FRONTAGE 439' FRONTAGE / 35' = 13 TREES	13 TREES
17.84.140-C-6(a) BUFFER STRIPS	...PROVIDE AN APPROVED YEAR-ROUND BUFFER A MINIMUM OF EIGHT FEET IN HEIGHT, CONSISTING OF FENCING, VEGETATION...	PROPOSED 6" HIGH FENCING AND PROPOSED TREES >8' IN HEIGHT
17.84.140-C-6(b) BUFFER STRIPS	MIN. 10' WIDE LANDSCAPE STRIP ALONG PROPERTY LINES PARALLEL TO A STREET WHERE PARKING OR CIRCULATION ARE ADJACENT TO SAID STREET  MINIMUM 5' LANDSCAPE STRIP ALONG SIDE AND REAR PROPERTY LINES WHERE PARKING AND CIRCULATION ARE ADJACENT TO ADJUTING PROPERTIES  WHERE A RESIDENTIAL USE ADJUTS NON-RESIDENTIAL USE, A 25' WIDE BUFFER STRIP MAY BE REQUIRED	>10' WIDE BUFFER  >5' WIDE BUFFER  >25' BUFFER PROVIDED
17.84.140-C-7(a) PARKING AREA LANDSCAPE REQUIREMENTS	...A MINIMUM OF TEN (10) SQUARE FEET OF LANDSCAPED AREA SHALL BE PROVIDED WITHIN A PARKING AREA FOR EACH PARKING SPACE IN SAID AREA 10 SF X 24 PARKING SPACES = 240 SF LANDSCAPE AREA	348 SF PARKING LANDSCAPE AREA PROVIDED
17.84.140-C-7(b) PARKING AREA LANDSCAPE REQUIREMENTS	20% OF PARKING AREA SHALL BE SHADED BY DECIDUOUS TREES THAT SHALL HAVE A CROWN (CANOPY) OF 30' AT MATURITY SURROUNDED BY AT LEAST 100 SF OF UNPAVED AREA 10,431 SF PARKING AREA X 20% = 2,086 SF SHADED AREA REQUIRED	8% PROVIDED (WAIVER REQUIRED)
17.84.140-C-7(c) PARKING AREA LANDSCAPE REQUIREMENTS	EACH ROW OF PARKING SPACES SHALL BE TERMINATED BY A LANDSCAPED ISLAND NOT LESS THAN 6' WIDE AND 12' LONG	PROVIDED: > 6' WIDE >12' LONG
17.84.140-C-7(d) PARKING AREA LANDSCAPE REQUIREMENTS	CONTINUOUS LANDSCAPED ISLAND NOT LESS THAN 8' WIDE SHALL BE PROVIDED BETWEEN EVERY 4 ROWS OF PARKING SPACES	N/A



**NOTES:**

- ALL PLANT STOCK SHALL CONFORM TO ANSI Z260.1 - NURSERY STOCK, LATEST EDITION (AMERICAN ASSOCIATION OF NURSERYMEN, INC.).
- A 4" DIA. TREE RING WITH 3" AGED PINE BARK MULCH TO BE INSTALLED AT BASE OF ALL TREES IN LAWN AREAS.
- UNLESS NOTED OTHERWISE, 3" AGED PINE BARK MULCH SHALL BE APPLIED TO SHRUB AND GROUND COVER BEDS.
- LANDSCAPE STONE SHALL BE TAN RIVERBED STONE. STONE SHALL BE (1 1/2) INCHES IN DIAMETER AND APPLIED AT A THICKNESS OF (4) INCHES DEEP. ALL FINES SHALL BE SCREENED FROM THE AGGREGATE. THE MATERIAL SHALL BE FREE OF ORGANIC AND INORGANIC DEBRIS AND TRASH. SUBMIT SAMPLE IN A 5-GALLON BUCKET TO THE DEVELOPER FOR APPROVAL.
- A WEED BARRIER (TY-PAR FABRIC OR APPROVED EQUAL) SHALL BE APPLIED TO ALL SHRUB AND GROUND COVER BEDS. INSTALL WEED BARRIER AS PER MANUFACTURERS RECOMMENDATIONS.
- ALL LANDSCAPED AREAS NOT PLANTED WITH TREES, SHRUBS OR GROUND COVER SHALL BE RESTORED WITH SEED AS INDICATED ON PLANS.
- ALL SEED, SHRUB AND TREE AREAS SHALL RECEIVE 6" PH CORRECTED TOPSOIL. AFTER TOPSOIL IS SPREAD EVENLY OVER ENTIRE AREA, ALL CLODS, LUMPS, STONES AND OTHER DELETERIOUS MATERIAL SHALL BE RAKED UP AND REMOVED.
- APPLICATION OF GRASS SEED, FERTILIZERS AND STRAW MULCH SHALL BE ACCOMPLISHED BY BROADCAST SEEDING OR HYDROSEEDING AT THE RATES OUTLINED BELOW:  
  
LIMESTONE: 100 LBS./1,000 SQUARE FEET.  
FERTILIZER: 500 LBS./ACRE OF 10-20-20 OR 1000 LBS./ACRE OF 5-10-10.  
STRAW MULCH: APPROXIMATELY 3 TONS/ACRE  
  
SEED MIX (SLOPES LESS THAN 4:1) LBS./ACRE  
CREEPING RED FESCUE 20  
TALL FESCUE 15  
PERENNIAL RYEGRASS 5  
REDTOP 42
- NEWLY GRADED AREAS REQUIRING SLOPE PROTECTION OUTSIDE OF NORMAL SEEDING SEASON SHALL RECEIVE STRAW MULCH AT THE APPROXIMATE RATE OF NO MORE THAN 3 TONS PER ACRE.
- ANY CHANGES IN PLANT LOCATIONS OR TYPES SHALL BE APPROVED BY THE DEVELOPER, LANDOWNER AND CITY PRIOR TO INSTALLATION.
- CLEAR AND GRUB (TO LIMITS REQUIRED ON GRADING PLAN) TO REMOVE VEGETATION, TREES, ROCKS, DEBRIS, ROOTS, ETC. STUMPS SHALL BE REMOVED AND DISPOSED OF OFF SITE IN ACCORDANCE WITH STATE REGULATIONS. AFTER CLEARING, STRIP AND STOCKPILE ALL ON-SITE TOPSOIL FOR REUSE TO THE MAXIMUM EXTENT POSSIBLE.
- FOR SEED AREAS USE EXISTING TOPSOIL, IF AVAILABLE, FOR A 4" DEPTH AND TOP DRESS WITH 2" OF SCREENED TOPSOIL, UNLESS OTHERWISE NOTED ON PLAN. ALL LOAM OR TOPSOIL IMPORTED OR RE-UTILIZED FROM ON SITE SHALL BE TESTED AND AMENDED AS DIRECTED BY DEVELOPER TO MEET MINIMUM REQUIREMENTS.
- PLANTINGS SHALL BE GUARANTEED BY THE CONTRACTOR FOR ONE YEAR AFTER WRITTEN ACCEPTANCE BY THE DEVELOPER.
- EXPOSED SOILS SHALL BE SEED OR STRAW MULCHED WITHIN 72 HOURS OF FINAL GRADING.
- ALL WORK SHALL BE COORDINATED WITH APPLICABLE EPA NPDES/SWPPP PERMIT WORK AS REQUIRED.
- THE CONTRACTOR SHALL INSTALL AN IRRIGATION SYSTEM TO PROVIDE COMPLETE COVERAGE OF ALL SEED AREAS AND SHRUB BEDS SHOWN ON THIS PLAN. THE SYSTEM SHALL INCLUDE A TIMER, BACKFLOW PREVENTION AND SHALL BE INSTALLED IN ACCORDANCE WITH LOCAL CODES.

**SITEology**

Corporate Office:  
3025 Highland Parkway, Suite 850  
Downers Grove, IL 60515  
Info@sevasolutions.com www.sevasolutions.com

INTEGRITY | RESPECT | TEAMWORK | EXCELLENCE | CHARITY

**REVISIONS**

NO.	DATE	DESCRIPTION

**LANDSCAPE CONSULTANT**

**GPI** Engineering Design Construction Management  
602.893.0720 GPI.NET.COM  
Greenwich Professional, Inc.  
44 Siles Road, Suite One  
Salem, NH 03079

**SEAL**

**CUSTOMER**

**PROJECT DESCRIPTION**

**WASHVILLE CARWASH**

**PROJECT LOCATION**

**1300-1310 OAKLAWN AVE. CRANSTON, RI 02920**  
(PROVIDENCE COUNTY)

**SHEET TITLE**

**LANDSCAPE PLAN**

**SHEET MANAGEMENT**

PROJECT NO.:  
DATE:  
CRITERIA:  
PROJECT MANAGER:

THIS DOCUMENT AND ALL SHEETS HEREIN ARE THE PROPERTY OF SEVA SOLUTIONS, INC. NO PART OF THIS DOCUMENT IS TO BE REPRODUCED OR TRANSMITTED IN ANY FORM OR BY ANY MEANS, ELECTRONIC OR MECHANICAL, WITHOUT THE EXPRESS WRITTEN PERMISSION OF SEVA SOLUTIONS, INC. © 2022. ALL RIGHTS RESERVED.

**SHEET NUMBER**

**L1.20**

GPI PROJECT NO. NEX-2200027

FILE NAME: P:\Projects\NEX-220027 - Cranston, RI - GR Development LLC\CAD Files\220027\_39.dwg LAST SAVED BY: Christopher Saras SAVED DATE: 9/7/2022 2:49 PM PLOTTED: 9/7/2022 3:50 PM